



February 1, 2008

VeriTape[®] Release 2.0

- **VeriTape[®] 2.0 analyzes the performance of the tape drives in addition to the cartridges**
- **Provides action recommendations for cartridges and drives**
- **Automatically identifies failing drives**
- **Adds a concise site overview**
- **Many other improvements**



1. Veri Tape® software is now also analyzing the tape drives in addition to the cartridges

One of the most misleading messages is the “**media error**” message on a LTO drive. The message simply means that the drive encountered an error condition from which it cannot recover. It *may* be due to defective media, but this is only one of many error possibilities and is actually quite an unlikely one. A “**media error**” message usually means that the drive needs maintenance, and there is in fact no problem with the cartridge. According to media vendors as many as 90% of perfectly good cartridges are being returned.

Differentiating between drive and media problems is a well-known problem. The new release of the Veri Tape® software solves this problem. In addition to rating the cartridges, the drives are also rated on the same scale. Drives that require maintenance are easily detected. Now you can have your tape drives serviced *before* they generate those confusing or misleading messages.

The screenshot shows the Veri Tape software interface with a menu bar (File, Edit, Action, Help) and a toolbar. The 'Drives' tab is selected, displaying a comparison table for two tape drives. The table has columns for Manufacturer, Min, Max, Avg, SD, and two IBM drive identifiers. The 'Drive Score' row shows a score of 90 for the first drive (green) and 68 for the second (orange). The 'Total Fatal Servo Errors' row shows 0 for the first drive and 2 (1.8 / TB) for the second (red).

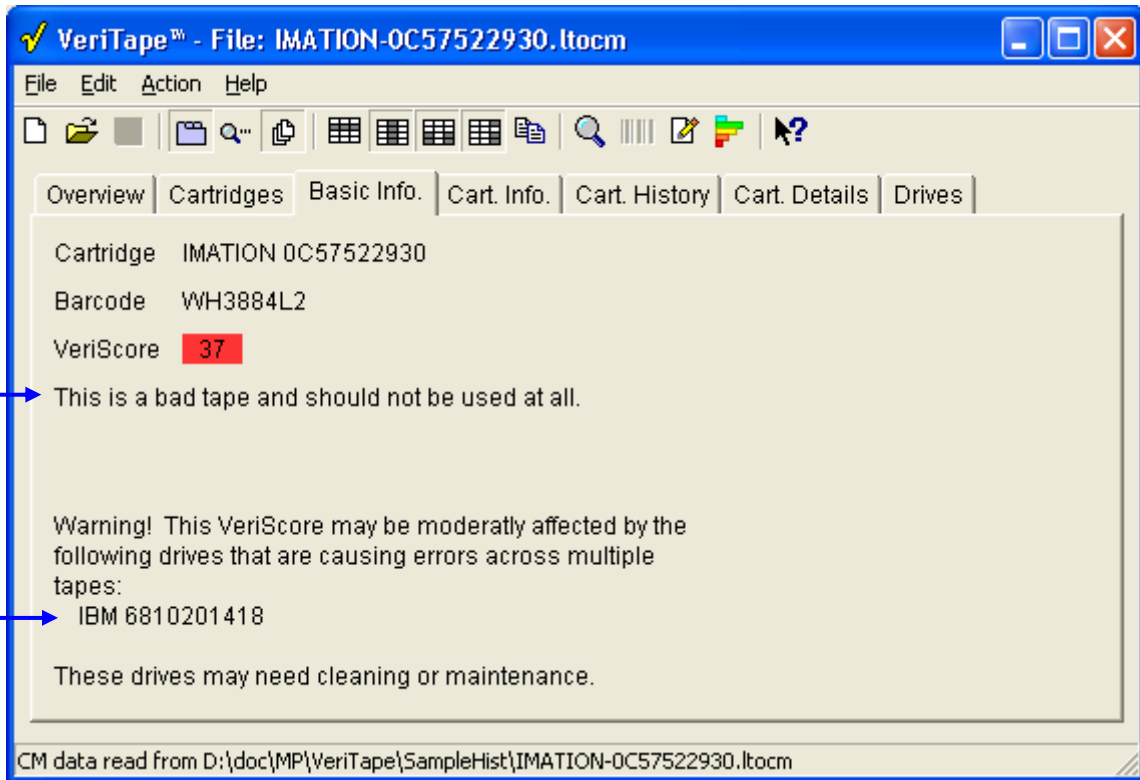
Manufacturer	Min	Max	Avg	SD	IBM	IBM
Serial Number					6810073374	6810201418
Drive Score	68.00	90.00	79.00	15.56	90	68
Records	14	25	19.5	7.77817	25	14
Total Data Read	281 MB	290 MB	285 MB	6 MB	281 MB	290 MB
Total Data Written	1.03 TB	1.11 TB	1.07 TB	55.6 GB	1.03 TB	1.11 TB
Total Write Retries	382 / TB	3.95 / GB	2.16 / GB	2.52 / GB	395 (382 / TB)	4389 (3.95 / GB)
Total Read Retries	0	48.3 / GB	24.2 / GB	34.2 / GB	0	14 (48.3 / GB)
Total Servo Errors	466 / TB	2.02 / GB	1.24 / GB	1.1 / GB	481 (466 / TB)	2249 (2.02 / GB)
Total Fatal Write Errors	0	0	0	0	0	0
Total Fatal Read Errors	0	0	0	0	0	0
Total Fatal Servo Errors	0	1.8 / TB	899 / PB	1.27 / TB	0	2 (1.8 / TB)

CM data read from D:\doc\MP\VeriTape\SampleHist\IMATION-OC57522930.Itocm



2. The Veri Tape® Basic Info screen gives the user clear recommendations what actions to take.

Many users asked us what is the meaning of the VeriScore™. If I have a cartridge with a score of 60, should I continue to use it? The new Overview screen recommends which action to take.



Automatic identification of failing tape drives

Action recommendation

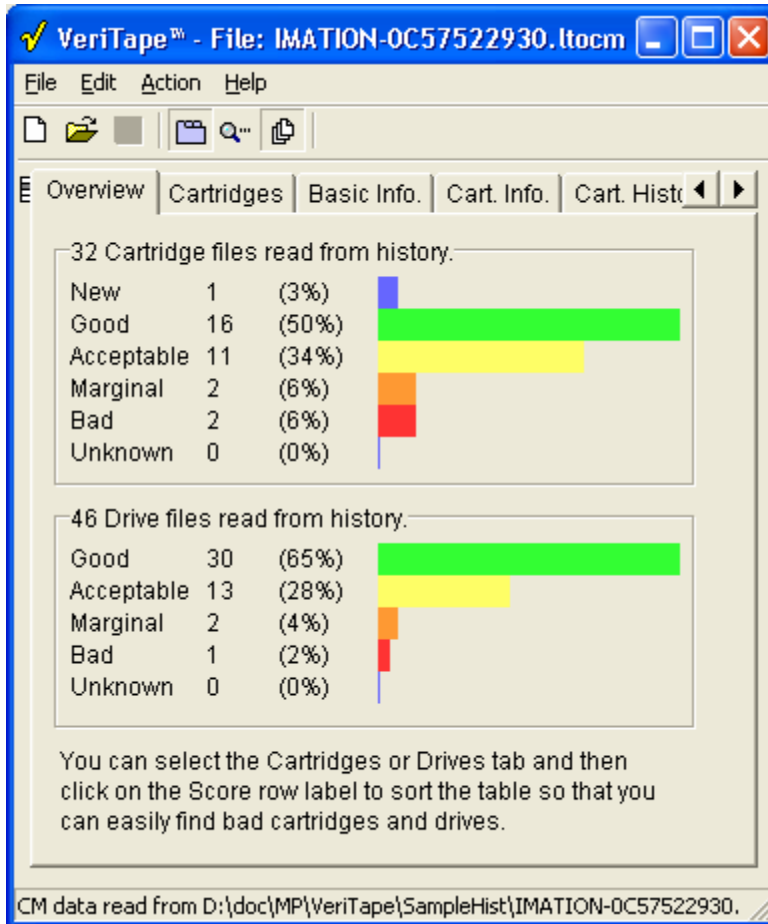
3. Automatic identification of failing tape drives

Any drive that may influence the cartridge score is automatically identified, and corrective actions are recommended.



4. Site Overview

This screen shows the overview of all cartridges and all drives. Cartridges and drives that require attention can be identified at a glance. Monitoring the quality of your tape storage system just got easier.



5. Other improvements

- Added option to swap rows/column when copying.
- Copy now available for Basic and Overview tabs.
- Added Volume serial number-based file naming option (File/Options submenu).
- Added automatic Volume serial number request for cartridges scanned without a Volume ID (File/Options submenu).
- Toolbar button added to "Open all history files" to show quality graph for cartridges and drives.
- Automatically create drive data files if missing from history directory.
- Cleaning Cartridges are shown in basic tab as "cleaning cartridge".
- Added option to write non-standard Volume ID's and Preset values.